

CUMULATIVE IMPACTS 101

HEALTH, EQUITY & ENVIRONMENTAL IMPACTS (HEEI)

AIR POLLUTION REGULATION



This graphic covers the basic facts about the Health, Equity & Environmental Impacts regulation. The HEEI is a newly proposed community-driven rule to address the overburdening of air pollution and their cumulative impacts on our local health, safety & well-being. The City of Albuquerque-Bernalillo County Air Board scheduled a hybrid public-hearing to include public comment this December 4th - 8th, 2023.

THE HEALTH, EQUITY & ENVIRONMENTAL IMPACTS REGULATION WHAT DOES THIS AIR POLLUTION REGULATION DO?

IT MAKES IT SO THOSE SEEKING AN AIR POLLUTION PERMIT IN AN **OVERBURDENED COMMUNITY** MUST COMPLETE A **HEALTH, EQUITY & ENVIRONMENTAL IMPACTS ASSESSMENT**

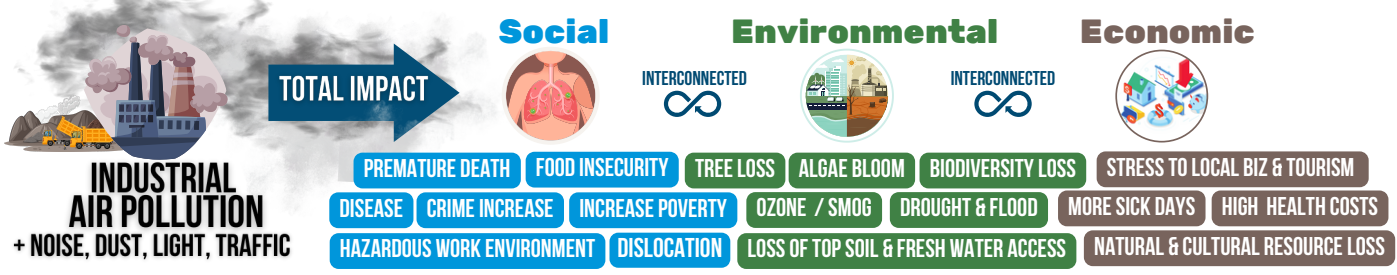


THE LOCAL AGENCY DOES NOT ADD TO THE **CUMULATIVE IMPACTS** OF AIR POLLUTION IN THESE COMMUNITIES OR VIOLATE THE CLEAN AIR ACT.

*CURRENTLY THERE IS SUCH NO REQUIREMENT FOR AN AIR POLLUTION PERMIT IN ALBUQUERQUE WHICH LEAVES OUR COMMUNITIES VULNERABLE. IN FACT: THE AIR PERMITTING PROCESS HAS NOT BEEN UPDATED IN OVER A DECADE - INCLUDING THE COST TO POLLUTE.

WHAT ARE 'CUMULATIVE IMPACTS'?

The **Cumulative Impacts** of air pollution are the **total burden** from chemical and non-chemical air pollutants and their interactions that affect the health, well-being, and safety of a person or population at a point in time or over a period of time.



WHAT IS AN 'OVERBURDENED COMMUNITY'?

An overburdened community are those neighborhoods who face high-risk and vulnerability from the air pollution that is already permitted. These neighborhoods face multiple sources of air pollution along with underlying social, economic and health inequities that increase harm caused.

THE HEEI DEFINITION OF AN OVERBURDENED COMMUNITY

A NEIGHBORHOOD AT *50TH PERCENTILE OR ABOVE FOR TWO OR MORE OF THE FOLLOWING:

- | | |
|--|---|
| <p>ENVIRONMENTAL RISKS</p> <ul style="list-style-type: none"> • Particulate Matter • Ozone (Smog) • Diesel Particulate Matter • Annual Toxic Releases • Traffic Proximity & Volume | <p>HEALTH RISKS</p> <ul style="list-style-type: none"> • Adult Asthma Rate • Youth Asthma Rate • Chronic Obstructive Pulmonary Disease (COPD) • Heart Disease & Stroke |
|--|---|

*50TH PERCENTILE MEANS MORE LIKELY THAN OVER HALF THE COUNTY TO FACE AN ABOVE HEALTH OR ENVIRONMENTAL RISK

SCAN TO SEE RISKS IN YOUR COMMUNITY



WHO WOULD BE REQUIRED TO COMPLY?

MANUFACTURING **ASPHALT PLANTS** **METAL YARDS**

ANY AIR POLLUTION PERMIT APPLICANT **THAT** **CANCER RISK** **NON-CANCER RESPIRATORY HAZARD RISK**

OIL & GAS TERMINALS **SEWAGE PLANTS** **POWER PLANTS**

these are examples are of air polluters who would likely need to comply

INCREASE THE AMOUNT OF

OR

by 1 in 1 million or higher

HOW DO WE BENEFIT FROM THE HEEI REGULATION?

SCIENTIFIC BENEFITS directly linked to reducing air pollution and air toxics.

- Economic Returns \$ to Local Economy
- Better Health Outcomes & Life Expectancy
- Reduce Crime & Public Safety
- Clean Air Sheds & Improved Visibility
- Safer & Cleaner Streets
- Increase Quality of Health Care
- Healthier Working Conditions / Less Sick Days
- Improve Learning & Education Outcomes
- Increase Access to Food & Nutrition
- Healthier Environment



WHO IS MOST IMPACTED by air pollution in Albuquerque, NM?

- Pregnant Women
- Babies, Kids & Seniors
- Low-income & People of Color
- Agricultural & Land-based
- Immigrant & Refugees
- People suffering of disability or disease
- People Living by Industrial Areas
- Pollinators Pets, Birds, & Bugs
- Athletes & Sports Players
- Artisanal & Traditional Craft Makers
- Small Local Business
- Unhoused & Homeless
- Energy, Chemical & Construction Workers
- Firefighters and First Responders
- Fishers & Hunters

OVERBURDENED NEIGHBORHOODS*

- MOUNTAIN VIEW
- SAN JOSE
- ATRISCO
- MARTINEZ TOWN
- DOWNTOWN
- LOS RANCHOS
- INTERNATIONAL DISTRICT
- SAWMILL
- SUPPER ROCK
- SINGING ARROW
- LOS VOLCANES
- GREATER GARDNER

*a partial list from U.S. Government data

SCAN FOR MORE INFO



the #EEI helps our city address environmental racism

make public comment this DEC. 4th-8th!

scan to see



WWW.LOSJARDINESINSTITUTE.ORG

